



Mr Whip, Hats 4 U, Renee & Sons Emporium, Gymnastics Showbags

Gymnastics hall foyer: Cathy Acree, Aroha Warburton, Hughenden Gymnastics

Nookie's Nursery, Cheryl Edmonds & Di Kendall- Preserves, craft, hats

Entrance via Stansfield St

Parking

Section 4- Craft
Katie Jones, CAN, Southern Gulf Catchments

Section 3

Cameron Downs School

Section 2

Woodfired Pizza, Gourmet Greek

Rear entrance Gate

Camping

PARKING

CATTLE YARDS

Historic Coolabah Tree

Hughenden RV Free Camp

scrap store



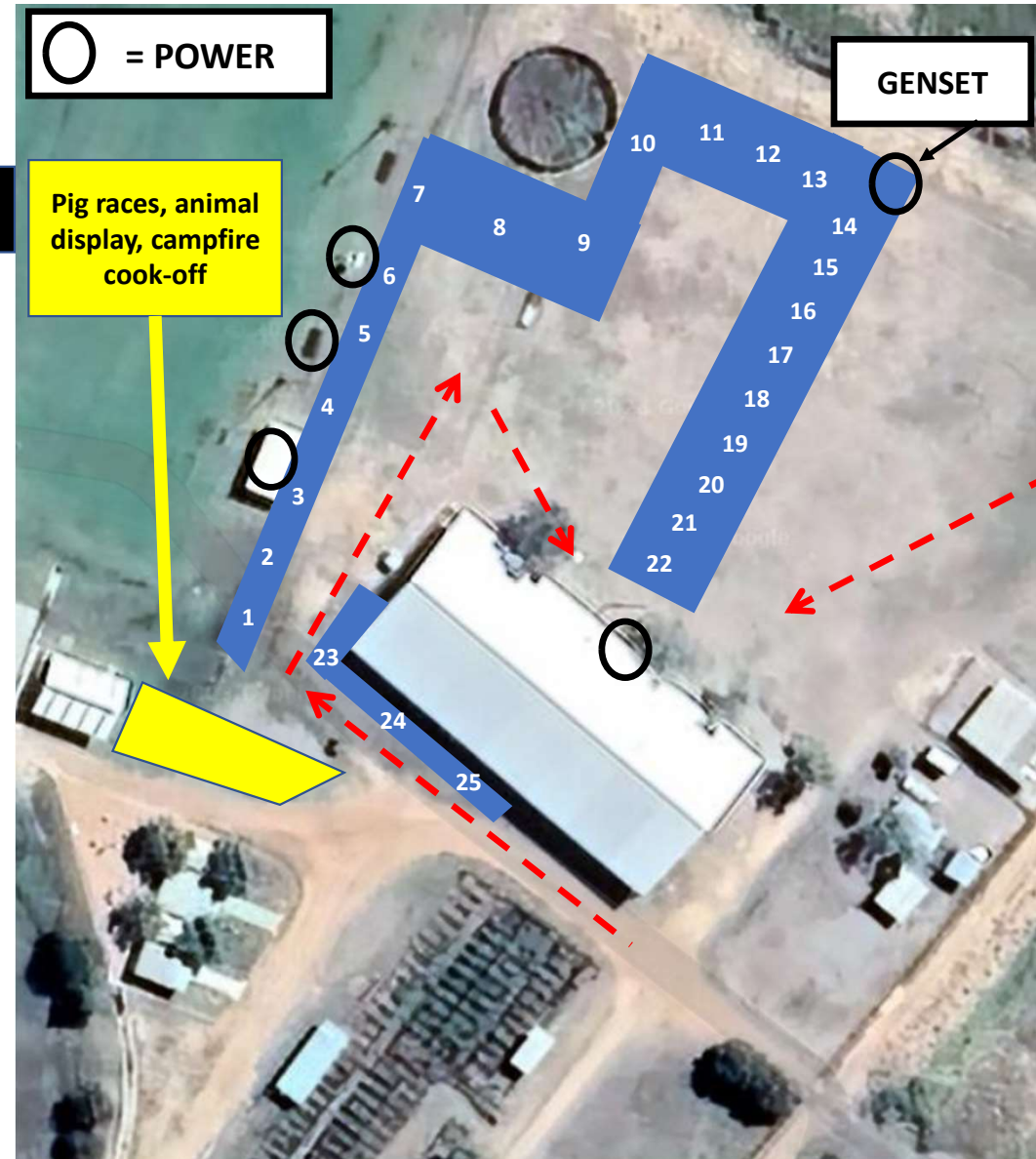
Section 1

- | | | |
|----------------------------|------|---|
| 1: All Souls St Gabriel's | 3x3m | **Note: Between 1 & 2 needs to be a space left for Senior's morning tea** |
| 2: Mickayla's Facepainting | 3x3m | |
| 3: Karen O'Donoghue | 6x3m | |
| 4: Freemason's | 6x3m | |
| 5: Flinders Shire Council | 6x3m | |
| 6: Mental Health Awareness | 3x3m | |
| 7: Donnie Harris Law | 3x3m | |

Section 2

EXHIBITOR LOCATIONS:

- | | |
|---------------------------------|----------------------------|
| 1: Chamber of Commerce 6x3m | 16: Middle of Nowhere 3x3m |
| 2: GJ Webber Auto Elec 3x3m | 17: Sheep Stn Creek 6x3m |
| 3: Makita 9x3m | 18: Brown & Hurley 12x12m |
| 4: Hughenden Freight & Ind 6x3m | 19: National Tyres 6x3m |
| 5: Milwaukee 6x3m | 20: Northern Rural 6x3m |
| 6: Dunlite/Yamaha 3x3m | 21: Outback Stampers 6x3m |
| 7: Metalcorp 12x6m | 22: Payne's Plumbing 9x3m |
| 8: Cummins/Valvoline 12x3m | 23: Westec 9x3m (Corner) |
| 9: HGW Contracting 3x3m | 24: Hughenden Moto's 9x3m |
| 10: Honeycombes 12x12m | 25: SPARE |
| 11: Rat Engineering 6x3m | |
| 12: Southern Steel 10x6m | |
| 13: Welder's Mart 6x3m | |
| 14: Beef Peddler 3x3m | |
| 15: HIPco 6x3m | |



Section 3



- 1: NAB 12x6m
- 2: Kennedy Rural 3x3m
- 3: Flinders Diesel 6x6
- 4: NQ Springs 6x3m
- 5: Fuchs 6x3m
- 6: Anna Tindall Graphic Designs 3x3m
- 7: Bontech 3x3m
- 8: Hastings Deering 6x3m
- 9: The Cathedral School 8x5m

- Bar auction items
- Food vendors
- Sheep shearing